




Business Scenario: Product Allocation in GATP – 12

Author: Olawoye Owy

Module: GATP – Product Allocation Flexibility with Product Allocation logic using Planning books in different buckets intervals.

Product Allocation user process training:

To test product allocation, you create a sales order or you change the quantity on existing sales order. Goto VA01 or VA02. If you use create TA: VA01 create a sales order, enter the quantity in the schedule line for the product which is on product allocation. OR If you are in TA: VA02 Place your cursor in the line item and click on

the  icon in the portion as shown below. PLEASE NOTE YOU ALLOCATION PLANNING BOOK SHOULD NOT BE OPEN WHILE TESTING...

All items

Item	Material	Order quantity	SU	S	Description
10	19905		100 EA	<input type="checkbox"/>	1100R20 H G286
				<input type="checkbox"/>	
				<input type="checkbox"/>	
				<input type="checkbox"/>	
				<input type="checkbox"/>	

You come to the following screen of availability check....

APO Availability Check: Delivery proposal

One-time delivery | Full delivery | Delivery proposal | Rule | Condition info | Check instructions

Order Item: 10 | Schedule Line: 1

Product: 19905 | 1100R20 H G286 TTT..

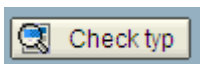
Production Plant: N607 | McDonough Dist Cntr

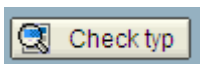
Requested date: 12/19/2004 | Open quantity: 100 EA

Fixed date and qty | Max.Part.Deliv.: 0

Sched. Line Overview

SL date	MAvailDt	Confirmed Quantity	ONE	FULL	Confirmed qty	Pro
12/19/2004	12/19/2004	100	<input type="checkbox"/>	<input type="checkbox"/>	100	<input type="checkbox"/>



Click on  Icon on the lower part of the screen. You will be able to see the product availability check and product allocation check in the screen which pops up...

Confidentiality:

No part of this document can be reproduced/circulated in any form with the written permission of Value Consulting



Business Scenario: Product Allocation in GATP – 12

Author: Olawoye Owy

Module: GATP – Product Allocation Flexibility with Product Allocation logic using Planning books in different buckets intervals.

APO Availability Check: Confirmation of Check Types

Product: 19905 1100R20 H G286 TTT/C605
 Requested date: 12/19/2004 Open quantity: 100

Product availability check

Mat.Avail.D...	Confirmed Qty	ONE	FULL	Confirmed qty	Pro
12/19/2004	100			100	

Product Allocations

Mat.Avail.D...	Confirmed Qty	ONE	FULL	Confirmed qty	Pro
12/19/2004	100			100	

Click on the icon  to go to details screen of product allocation...

Confidentiality:

No part of this document can be reproduced/circulated in any form with the written permission of Value Consulting



Business Scenario: Product Allocation in GATP – 12	Author: Olawoye Owy
Module: GATP – Product Allocation Flexibility with Product Allocation logic using Planning books in different buckets intervals.	

APO: Product Allocations Result

Characteristics Item Legend

Alloc. Procedure: PAP_PROD_SALESORG Step:

Settings

Consumption: Cumulated Prod.Alloc. Grp: PAG_PROD_SALESORG
 Without past period: No Consumption in Pas Check Date: GOODS ISSUE DATE
 Backwards: 0 W Wildcard: #
 Forwards: 0 W Coll.prod.alloc.:

Unit of measure: EA

Product allocations results

Sc...	S...	Material Av...	CheckDate	Requested quantity	Sc...	Confirmed ...	Confirmed ...	Confirmed quantity	Confirmed qty
1	1	12/19/2004	12/19/2004	100	1	12/19/2004	12/19/2004	100	100

You can review allocation consumed and remaining in the standard product allocation TA:/sapapo/ac42

Confidentiality:

No part of this document can be reproduced/circulated in any form with the written permission of Value Consulting



Business Scenario: Product Allocation in GATP – 12	Author: Olawoye Owy
Module: GATP – Product Allocation Flexibility with Product Allocation logic using Planning books in different buckets intervals.	

APO: Product Allocation Display

Parameters

Prod.allocation obj.

Product

Sales Organization

Unit of measure

Product allocation situation

Week	From	To	Prod. alloc. qty	Incoming Orders Qty	Remain. prod. alloc.
47.2004	15.11.2004	21.11.2004	900	900	
48.2004	22.11.2004	28.11.2004	1.000		1.000
49.2004	29.11.2004	05.12.2004	1.200		1.200
50.2004	06.12.2004	12.12.2004	1.200		1.200
51.2004	13.12.2004	19.12.2004	3.200	100	3.100

Planning Book to manage allocation quantity

You can go to the planning book and see how much is the allocation qty and how much are sales orders (100 for our test example) against that allocation.

The row "Allocation Qty from Infocube" will show as Green if the allocation for the week or month is zero. The Cell in the row "Allocation exhausted (in %)" will show up as Red if the customer has consumed 75% of Allocation.

Confidentiality:

No part of this document can be reproduced/circulated in any form with the written permission of Value Consulting



Business Scenario: Product Allocation in GATP – 12	Author: Olawoye Owy
Module: GATP – Product Allocation Flexibility with Product Allocation logic using Planning books in different buckets intervals.	

Book: [Live] SALES ORG ALLOC / SALES ORG VIEW 1

	Unit	W 47.2004	W 48.2004	W 49.2004	W 50.2004	W 51.2004	W 52.2004	W 53.2004	W 54.2004
Allocation Qty From InfoCube	EA	641	2,200	3,400	1,100	1,600	1,000		
Adjustment (+/-)	EA						1,000		
Corrected Allocation	EA	641	2,200	3,400	1,100	1,600	2,000		
Sales Order	EA		2,200	3,326					
Open Allocation Qty	EA	641		74	1,100	1,600	1,000		
Allocation exhausted (in %)	EA		100	98					
Physical Stock	EA								

Confidentiality:

No part of this document can be reproduced/circulated in any form with the written permission of Value Consulting



Business Scenario: Product Allocation in GATP – 12	Author: Olawoye Owy
Module: GATP – Product Allocation Flexibility with Product Allocation logic using Planning books in different buckets intervals.	

6 PLANNING BOOKS FOR EACH OF THE DIFFERENT METHOD OF PRODUCT ALLOCATIONS USED ARE AS SHOWN BELOW:

ALLOC_DC_MO	PRODUCT ALLOCATION BY DC BY MONTH
ALLOC_DC_WK	PRODUCT ALLOCATION BY DC BY WEEK
ALLOC_PROD_CUST_MO	PRODUCT ALLOCATION BY CUSTOMER BY MONTH
ALLOC_PROD_CUST_WK	PRODUCT ALLOCATION BY CUSTOMER BY WEEK
ALLOC_SO_MO	PRODUCT ALLOCATION BY SALES ORG BY MONTH
ALLOC_SO_WK	PRODUCT ALLOCATION BY SALES ORG BY WEEK

The final planning book would be as shown below:

Monthly Book

Unit	M 11/2004	M 12/2004	M 01/2005	M 02/2005	M 03/2005	M 04/2005
Allocation Qty from Infocube	EA					
Previous Period Allocations	EA					
Sales Order	EA					
Available Allocation	EA					
Allocation exhausted (in %)	EA					

Weekly Book

[Live] PRODUCT ALLOCATION BY SALES ORG BY WEEK / SALE

Unit	W 45/2004	W 46/2004	W 47/2004	W 48/2004	W 49/2004	W 50/2004
Allocation Qty from Infocube	EA					
Previous Period Allocation	EA					
Sales Order	EA					
Available Allocation Qty	EA					
Allocation Exhausted (in %)	EA					

Confidentiality:

No part of this document can be reproduced/circulated in any form with the written permission of Value Consulting



Business Scenario: Product Allocation in GATP – 12

Author: Olawoye Owy

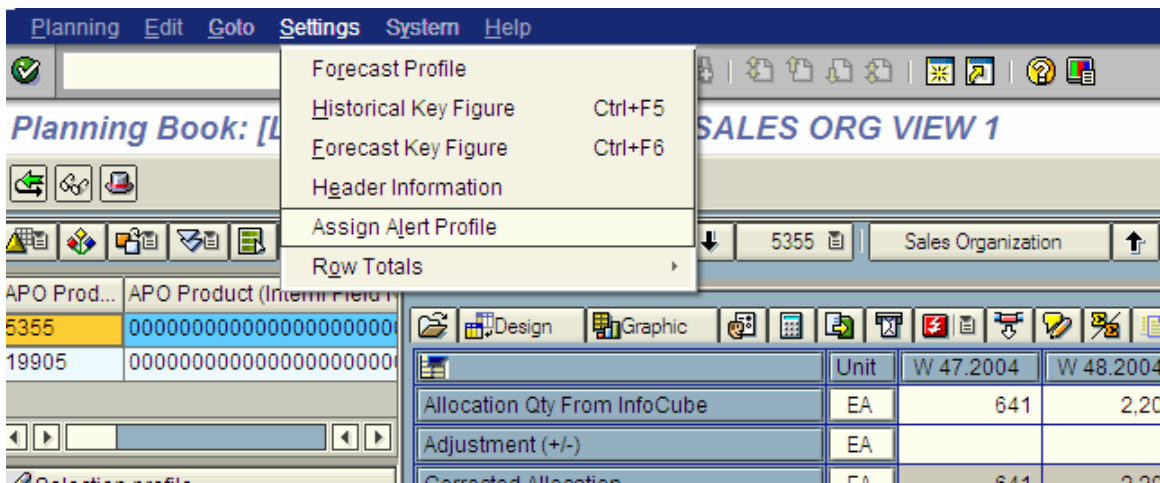
Module: GATP – Product Allocation Flexibility with Product Allocation logic using Planning books in different buckets intervals.

Database Alerts for the 75% allocation consumption:-

In the above example, the time buckets Week 48 and Week 49 of year 2004, the Red cells indicate the allocation is greater than 75%. But to know this; the user has to load each product to know if the 75% of allocation has been exhausted which might be very laborious process.

This is where DB (Database) Alerts come handy; to view the DB alerts follow the steps given below.

Before you start using the DB Alerts, the user has to ensure he has assigned alert profile to his/her planning book. To do this; from the top menu select “Settings” and then “Assign Alert Profile”.



Assign the Alert Profile " PRODALLOC" as shown below.

Confidentiality:

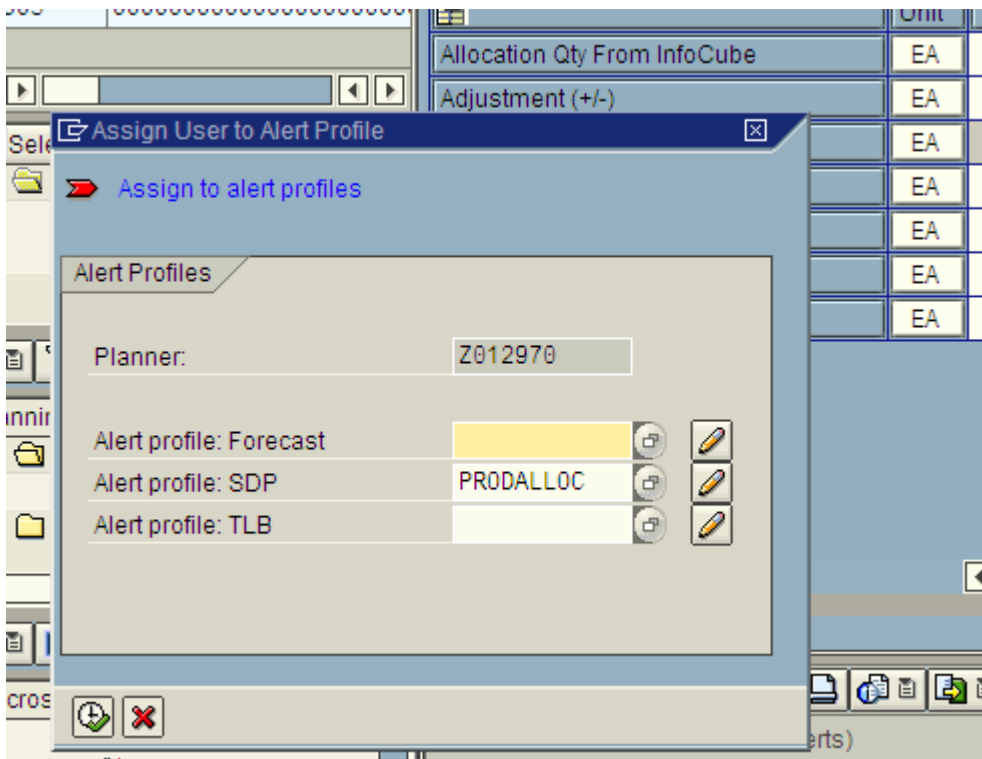
No part of this document can be reproduced/circulated in any form with the written permission of Value Consulting



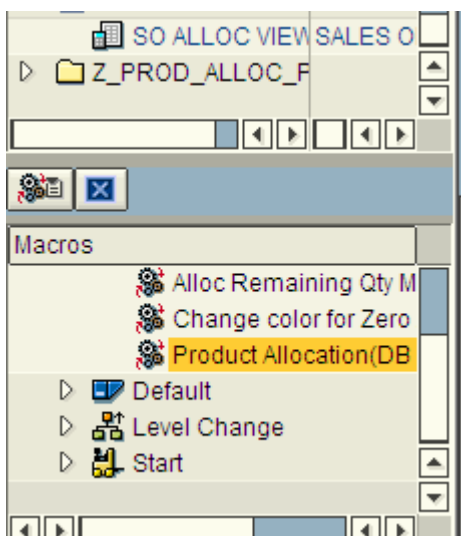
Business Scenario: Product Allocation in GATP – 12

Author: Olawoye Owy

Module: GATP – Product Allocation Flexibility with Product Allocation logic using Planning books in different buckets intervals.



On the Left bottom corner of the screen under the box “Macro” goto “Directly executable macro’s” and double click on the Product Allocation (DB Alert).

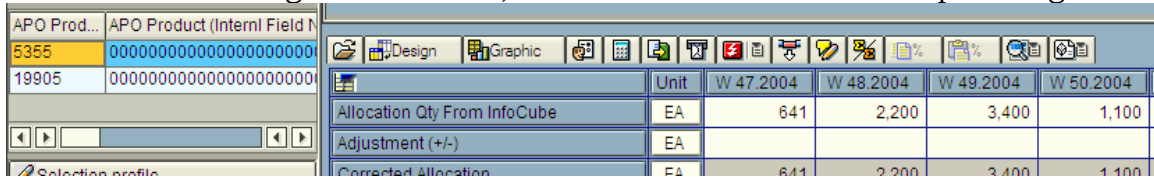


Confidentiality:



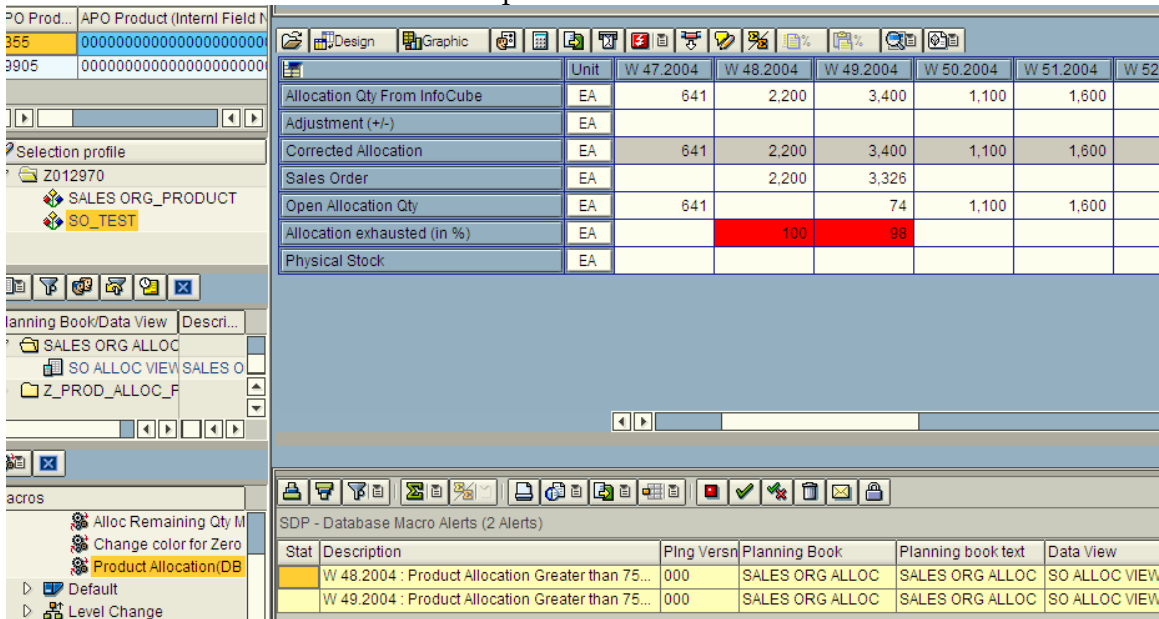
Business Scenario: Product Allocation in GATP – 12 **Author:** Olawoye Owy
Module: GATP – Product Allocation Flexibility with Product Allocation logic using Planning books in different buckets intervals.

After double clicking on the macro, click on  icon from the planning book icon



	Unit	W 47.2004	W 48.2004	W 49.2004	W 50.2004
Allocation Qty From InfoCube	EA	641	2,200	3,400	1,100
Adjustment (+/-)	EA				
Corrected Allocation	EA	641	2,200	3,400	1,100

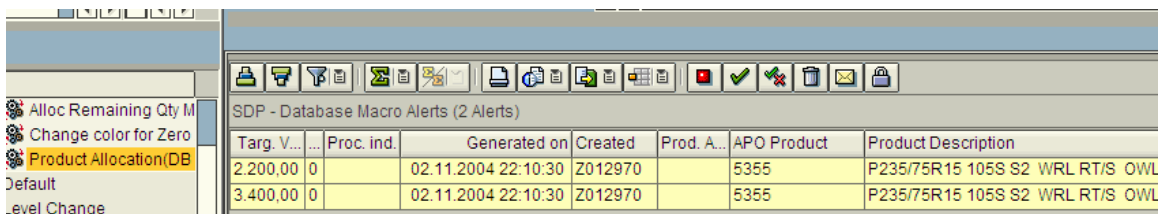
You will see that the alerts show up at the bottom of the screen.



	Unit	W 47.2004	W 48.2004	W 49.2004	W 50.2004	W 51.2004	W 52
Allocation Qty From InfoCube	EA	641	2,200	3,400	1,100	1,600	
Adjustment (+/-)	EA						
Corrected Allocation	EA	641	2,200	3,400	1,100	1,600	
Sales Order	EA		2,200	3,326			
Open Allocation Qty	EA	641		74	1,100	1,600	
Allocation exhausted (in %)	EA		100	98			
Physical Stock	EA						

Stat	Description	Plng Versn	Planning Book	Planning book text	Data View
	W 48.2004 : Product Allocation Greater than 75...	000	SALES ORG ALLOC	SALES ORG ALLOC	SO ALLOC VIEW
	W 49.2004 : Product Allocation Greater than 75...	000	SALES ORG ALLOC	SALES ORG ALLOC	SO ALLOC VIEW

Scroll to the Right to see the product with the problem here the product 5355 has customer consuming 75% of its allocated quantity. This may be used to increase allocation of the customer who buys your product more as compared to one who is not buying to maximize your turnover.



Targ. V...	Proc. ind.	Generated on	Created	Prod. A...	APO Product	Product Description
2.200,00	0	02.11.2004 22:10:30	Z012970		5355	P235/75R15 105S S2 WRL RT/S OWL
3.400,00	0	02.11.2004 22:10:30	Z012970		5355	P235/75R15 105S S2 WRL RT/S OWL

Confidentiality:

No part of this document can be reproduced/circulated in any form with the written permission of Value Consulting



Business Scenario: Product Allocation in GATP – 12	Author: Olawoye Owy
Module: GATP – Product Allocation Flexibility with Product Allocation logic using Planning books in different buckets intervals.	

The report /SAPAPO/RMQUOT_USAGE_ORDER will show you the allocation by each sales order...

0074867097	10	19905				N602	PAP_PROD_SALESORG
1 18.10.2004		51	EA	51		PAG_PROD_SALESORG	PAP_PROD_SAL
0074867098	10	19905				N602	PAP_PROD_SALESORG
1 15.11.2004		900	EA	900		PAG_PROD_SALESORG	PAP_PROD_SAL
0074867099	20	19905				N602	PAP_PROD_SALESORG
0074867100	20	19905				N602	PAP_PROD_SALESORG
0074867102	10	19905				N602	PAP_PROD_SALESORG
0074867105	10	19905				N602	PAP_PROD_SALESORG
0074867106	10	19905				N602	PAP_PROD_SALESORG
1 13.12.2004		100	EA	100		PAG_PROD_SALESORG	PAP_PROD_SAL

To switch ON or switch OFF allocation on a product, remove the Product Allocation Procedure from the product master in APO.

Product	19905	Base Unit	EA
Prod. Descriptn	1100R20 H G286 TTT/C60505		
Location	N602	Columbus Dist Cntr	

Administr.
 Attributes
 Units of Meas.
 Classification
 ATP
 SNP

Cross-Location	
Alloc. Proced.	PAP_PROD_SALESORG
Procedure seq.	

Location-Dependent	
Loc.-dep.proced	<input type="checkbox"/>
Loc.-dep. seq.	

Confidentiality:

No part of this document can be reproduced/circulated in any form with the written permission of Value Consulting